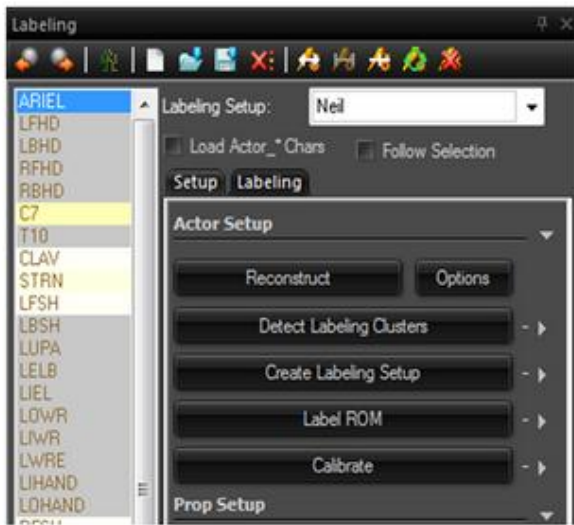
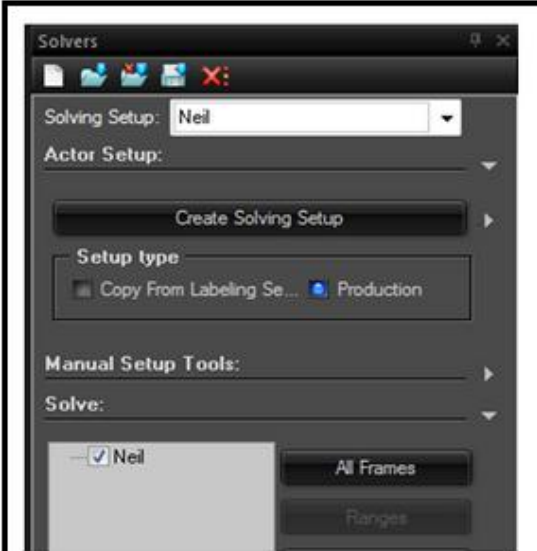


Processing ROM (Actor Setup) see [deborahfowler.com/ProcessROM](http://deborahfowler.com/ProcessROM)



Note, Label ROM and Calibrate will be grayed out until Create Labeling Setup is run



After Reconstruct

Hint: 3.5 – adjust marker size

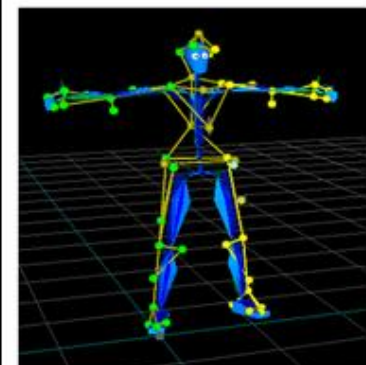
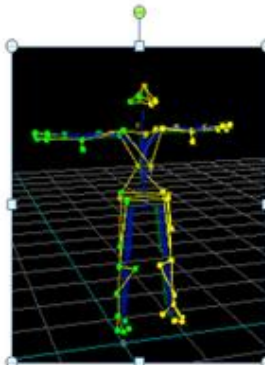
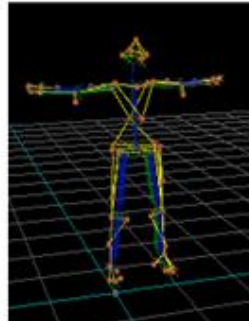
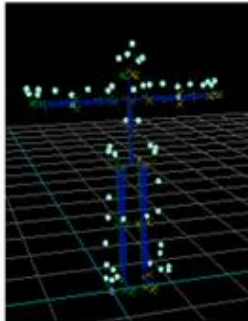
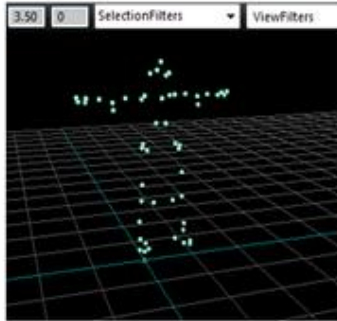
After Create Labeling Setup

Labeling Setup

After Label ROM

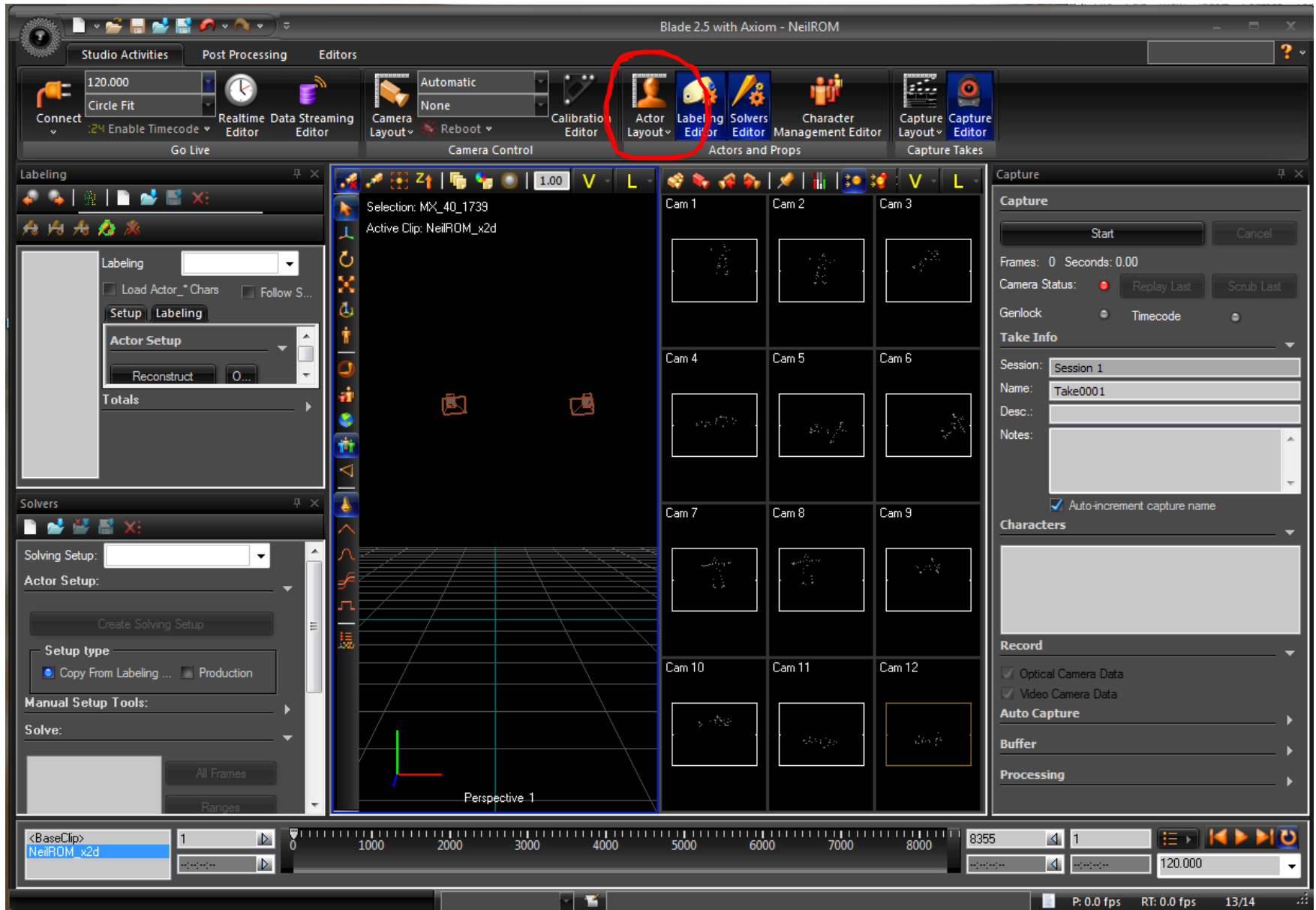
After Calibrate

After Solving



double click the blue icon in Data Management to process the x2d data from the ROM

Click **Actor Layout** to bring up the Labeling and Solvers dialogue box on the left



# Labeling Steps: 1. Reconstruct with Options (settings)

The screenshot displays the Blade 2.5 software interface. The 'Labeling Setup' panel on the left has the 'Reconstruct' button circled in red. A yellow arrow points from this button to the 'Reconstruction Settings' panel on the right. The 'Reconstruction Settings' panel is highlighted with a green border and contains the following settings:

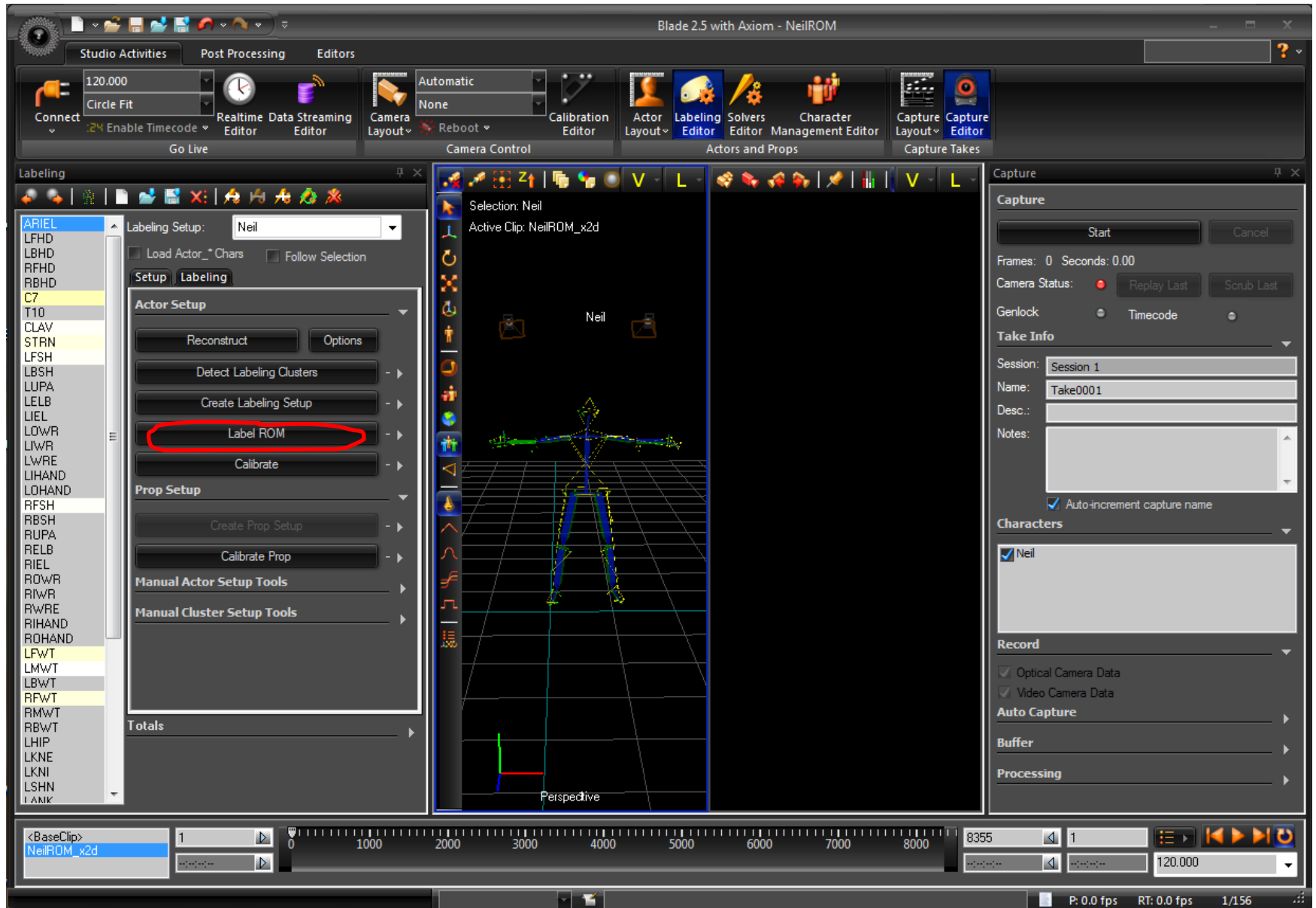
Reconstruction	
Reconstruct	All
Grayscale Fitting Settings	
Enabled	<input checked="" type="checkbox"/>
Fit Method	Auto
Fast Fit Quality Threshold	0.500000
Slow Fit Quality Threshold	0.300000
Fast Fit Size Threshold	1024
Slow Fit Size Threshold	200
Slow Fit Intensity Threshold	0.300000
Number of threads	0
Reset	Reset
Reconstruction Settings	
Ray Noise Factor	1.000000
Environmental Drift Tolerance	1.500000
Minimum Cameras to Start Trajectory	3
Minimum Cameras to Continue Traj...	2
Reconstruction Minimum Separation	0.000000
Minimum Centroid Radius	0.000000
Maximum Centroid Radius	50.000000
Minimum Reconstruction Radius	0.000000
Maximum Reconstruction Radius	1000.000000
Apply Radius	<input checked="" type="checkbox"/>
Trajectory Fitting Method	2D Tracks (M)
Prediction Match Factor	2.000000
Minimum Trajectory Length	2
Trajectory Startup Error	150.000000
Trajectory Prediction Error	300.000000
Number of threads	1
<b>Min Volume</b>	
X	-100000.000...
Y	-100000.000...
Z	-100000.000...
<b>Max Volume</b>	
X	100000.000...
Y	100000.000...
Z	100000.000...
Reset	Reset
<b>Trajectory Fitting Method</b>	
Specifies the method used to create trajectories. Options: "2DTracks" or "3DPredictions".	

## Labeling Steps: 2. Create Labeling Setup (parameters expanded)

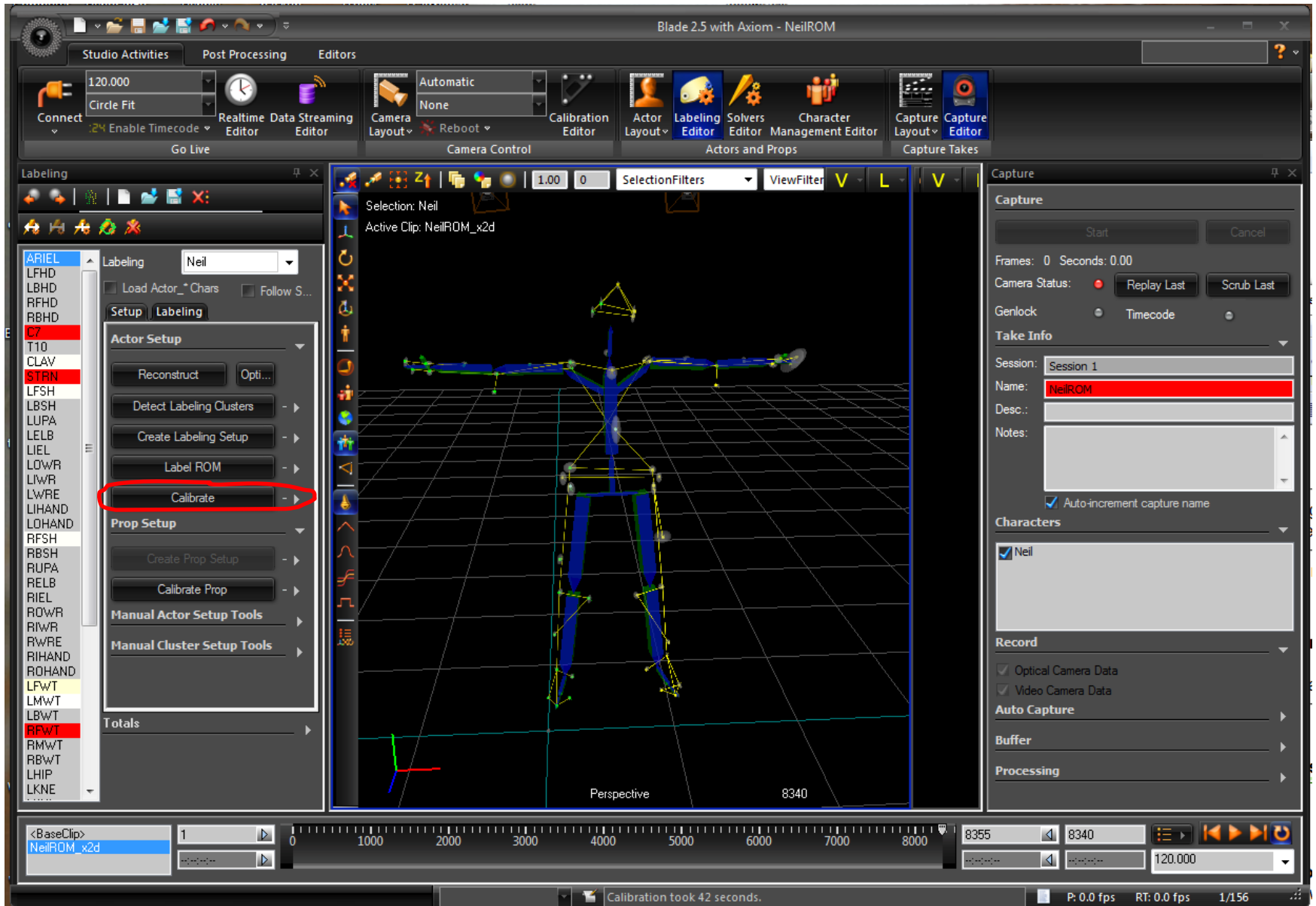
The screenshot displays the MotionBuilder software interface during the 'Create Labeling Setup' step. The main window shows a 3D perspective view of a character model named 'Neil' with a grid floor. The 'Labeling Setup' panel on the left is open, and the 'Create Labeling Setup' button is highlighted with a red circle. A yellow arrow points from this button to the expanded 'Labeling' panel on the right, which shows the following parameters:

Parameter	Value
Bone Naming Scheme	MotionBuilder
Finger Markers	None
Middle Waist Markers ...	Sides
Global PreScale Method	Automatic
Manual Scale Factor	100.000000
Label Order	ARIEL,LFHD,...
Marker Color Left	Yellow R: 255 G: ...
Marker Color Middle	Olive R: 150 G: ...
Marker Color Right	Green R: 0 G: 25...
Stick Color Left	Yellow R: 255 G: ...
Stick Color Middle	Olive R: 150 G: ...
Stick Color Right	Olive R: 150 G: ...
Bone Color	Green R: 0 G: 18...
Auto Bone Color	Off
Bone Color Mult	1.000000
Reset	Reset

# Labeling Steps: 3. Label ROM



# Labeling Steps: 4. Calibrate





# Solving Steps: 5 and 6. Create Solving Setup and solve All Frames

